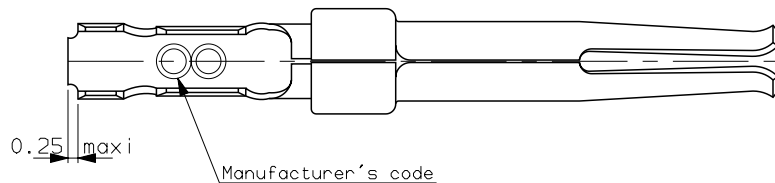
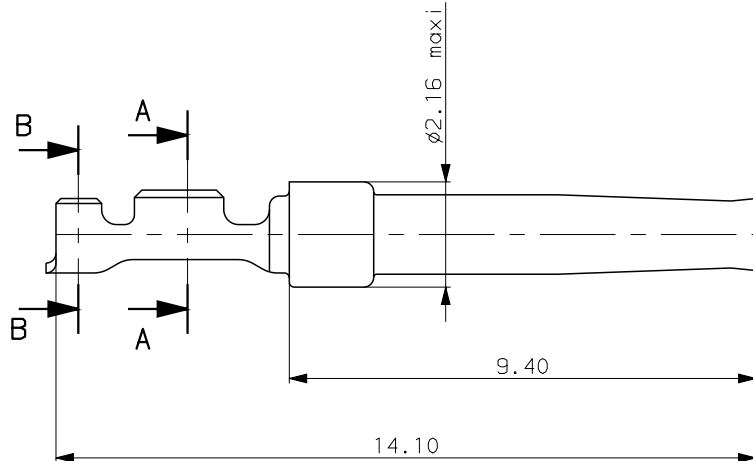
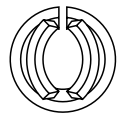
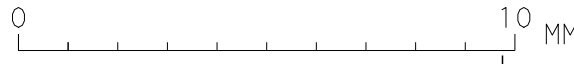
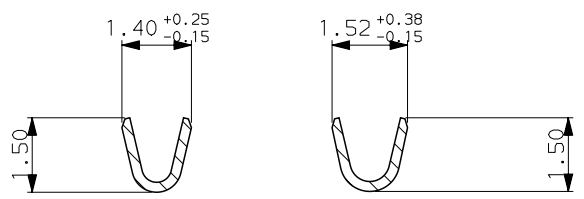


H G F E D C B A



SECTION A-A

SECTION B-B



NOTES

1. Material: phosphor bronze, thickness 0.20
2. Finish on contact area : see table.
Finish on terminaison end bright tin-lead over nickel.
3. Wire range: #24 to #28AWG
4. Max. outer diameter of insulated wire: 1.02mm
5. Current carrying capacity of individual contacts:
 - 3.0Amps max. when crimped to #24AWG
 - 2.0Amps max. when crimped to #26AWG
 - 1.5Amps max. when crimped to #28AWG
6. After 5 insertions into male connector, contact must be retained in housing when subjected to a 5 pound axial pull
7. When contact is crimped to #24AWG, the insulation support crimp height must be 1.78mm max. to ensure proper insertion into housing
8. Packaging : Reel of 5000 contacts

8656-6510 067	0.40μ Au
8656-6510 065	0.76μ Au
8656-6510 064	Flash Au
PART NUMBER	Plating

c	03/11/98	-	add part number 8656-6510 067	--
ISS	DATE	Latest modification by : JOUBERT		MOD N°
Designed by: JARRY			date 28/01/97	Type of drawing: CLIENT
TITLE : SOCKET CONTACT #24 TO #28 AWG (removable crimp contact.)				SHEET 1/1
SCALE: 10	FRAMATOME CONNECTORS FRANCE Rue Louis Breguet - BP 05 72024 LE MANS Cedex Tel. 33 (16) 43.84.08.43			
	This document is the property of FRAMATOME CONNECTORS FRANCE. It must not be reproduced or communicated without permission in writing from the owners.			
FORMAT A3	SOURIAU DRG N° C01-8656-0423		PROJECT M94D001	

H G F E D C B A